

Nichols Farms

Private Treaty Bull Sale

64 Years of Superior Beef Genetics

*"Large or small, old or new - Nichols customers are our friends, and can expect the same level of performance and service from our seedstock and our team... and you become a part of the Nichols family."
Come and take a look at some of the best bulls in the beef industry. —dave nichols*



NICHOLS BULL EXTRA - PROVEN PERFORMERS

We're offering the yearling herd bulls that pasture bred our cows and heifers this year. These **Power Bulls** have amazing weaning weight, rates of gain, yearling weight and \$Value EPDs. They rank at or near the top in the seedstock industry.



dave nichols

They are the "best of the best" — that's why we used them. Their sons will be in our bull barn and for sale next year and their daughters will be grazing our pastures.

Nichols Farms was the first herd (1987) to utilize ultra-sound to measure IMF% (marbling) and lean yield (yield grade).

Nichols Farms is the clear leader in utilizing DNA technology. The past twelve years **Nichols herd sires** have been evaluated by DNA for the entire suite of traits including feed efficiency. Plus they are free of genetic abnormalities by pedigree or DNA tests.

About 40 Nichols Bulls have stood in major A.I. Studs the past 50 years. Many of them were offered in the Bull Extra sales.

Call or visit - select one or more of these bulls that are ready to go to work in your herd. Semen checked. \$100 off the price, if you pick them up.

Bull barn 641-369-2829 - Ross 641-745-5241 - night 712-762-3810



Nichols Final Answer Y34 after breeding 36 cows on Fescue pasture. His Epds rank him in the top 1% for WW, \$W, 2% Doc, YW, 10% \$F and ranks 7th in the breed for \$Weaning

production

carcass

BW	WW	MM	YRL	RADG	MARB	REA	FAT	\$W	\$F	\$B
-5	+78	+24	+122	+21	+56	+40	+03	+\$87	+\$86	+\$128

Angus NICHOLS CHANCELLOR D91 18645204

ID D91 birth date 3/18/16

S A V BISMARCK 5682
THOMAS TOP HAND 0536
THOMAS RUBY ERICA 8293
NICHOLS STEADFAST W137
NICHOLS MISS ELDINA Z529
NICHOLS MISS ELDINA S329

Individual Performance:

BW	205	ADG	Yrl	Frame
86	743	3.94	1377	6.0

Expected Progeny Differences: EPDs

CED	BW	WW	YW	RADG	MM	Doc	HP	Scrotal
2	+1.8	+60	+110	+21	+20	+14	+11	+1.

Carcass Merit - EPDs

Marb	RE	Fat	\$Wean	\$Feedlot	\$Beef
.73	.48	-.050	\$51	\$72	\$150

Top15% Year, HP, CEM, CW, \$F, \$B - Top 20%, Marb, QG....\$6,500

Angus NICHOLS FINAL ANSWER D22 18638341

ID D22 birth date 3/12/16

S A V FINAL ANSWER 0035
NICHOLS FINAL ANSWER Y34
NICHOLS BLACK HEIRESS W53
A A R TEN X 7008 S A
NICHOLS QUEEN B9
NICHOLS QUEEN Z500

Individual Performance:

BW	205	ADG	Yrl	Frame
71	684	3.79	1290	5.5

Expected Progeny Differences: EPDs

CED	BW	WW	YW	RADG	MM	Doc	HP	Scrotal
11	+1.6	+72	+119	+23	+25	+15	+14	+7

Carcass Merit - EPDs

Marb	RE	Fat	\$Wean	\$Feedlot	\$Beef
.34	.68	-.002	\$80	\$76	\$136

Top 3% Wean, \$W - Top15% Year, Doc, HP, CEM, \$F.....\$6,500

Angus NICHOLS KING D156 18641262

ID D156 birth date 3/22/16

MYTTY IN FOCUS
A A R Ten X 7008 S A
A A R LADY KELTON 5551
CONNEALY IMPRESSION
NICHOLS BLACKBIRD Z155
NICHOLS BLACKBIRD X155

Individual Performance:

BW	205	ADG	Yrl	Frame
71	789	3.59	1368	6.2

Expected Progeny Differences: EPDs

CED	BW	WW	YW	RADG	MM	Doc	HP	Scrotal
11	+0	+64	+114	+20	+24	+14	+14	+1.5

Carcass Merit - EPDs

Marb	RE	Fat	\$Wean	\$Feedlot	\$Beef
.75	.51	-.007	\$68	\$70	\$132

Top 10% CED, Year, \$W, CEM, \$QG - Top15% Wean, \$F...\$7,500

Feed Efficiency (RADG)

RADG EPD allows producers to select Angus genetics that will perform more efficiently in a feedlot. It provides an EPD to identify cattle that, with a given quantity of feed, will still perform well. The individual intake data and genomic information on dry-matter intake in a genetic evaluation gives beef producers a valuable tool to select for feed efficient genetics.

Thomas Top Hand has a low birth and high growth spread. He ranks in the top 10% for BW, WW, YW, RADG, Scrotal, Heifer Pregnancy, Maternal Calving Ease, Carcass wt. \$W, \$F, and \$B



production

carcass

BW	WW	MM	YRL	RADG	MARB	REA	FAT	\$W	\$F	\$B
-1.3	+68	+31	+119	+30	+.59	+.58	+.00	+\$72	+\$33	+\$158

NICHOLS BULL EXTRA - Coming Two Year Olds



After weaning, Nichols Farms' gain test about 500 bulls for ADG, yearling wt, rib eye area and marbling. They are

never pampered and are fed in fence line bunks in large pens by feed trucks like their steer progeny will be.



K C F Southside delivers extra performance with an incredible +77 \$Weaning and +187 \$Beef combination. Like his sire, Nichols Extra K205, his daughters have great performance, fertility and neat udders.

production

carcass

BW	WW	MM	YRL	RADG	MARB	REA	FAT	\$F	\$QG	\$B
+3.5	+85	+27	+150	+32	+81	+62	-.03	+\$126	+\$40	+\$186

Angus NICHOLS EXTRA D209

18643367

ID D209 birth date **3/26/16**

NICHOLS EXTRA K205
K C F BENNETT SOUTHSIDE
K C F MISS 208 S11
NICHOLS SPECIAL DUTY H75
NICHOLS FORMULA R435
NICHOLS FORMULA J270

Individual Performance:

BW	205	ADG	Yrl
89	684	4.14	1338

Expected Progeny Differences: EPDs

CED	BW	WW	YW	RADG	MM	Doc	HP	Scrotal
+0	+4.3	+62	+110	+29	+29	+21	+15	+2.20

Carcass Merit - EPDs

Marb	RE	Fat	\$Wean	\$Feedlot	\$Beef
.32	.48	-.053	\$56	\$70	\$140

Top 25% WW, YRL, RADG, SC, Doc, HP, MK, \$W, \$F, \$B...\$4,500

Angus NICHOLS STANDARD D337

18638394

ID D337 birth date **4/5/16**

CHERRY CRK HIGH STANDARD
NICHOLS HIGH STANDARD B10
NICHOLS PRIDE Z427
NICHOLS QUIET LAD T9
NICHOLS LULA W5
NICHOLS LULA T99

Individual Performance:

BW	205	ADG	Yrl
85	635	4.43	1339

Expected Progeny Differences: EPDs

CED	BW	WW	YW	RADG	MM	Doc	HP	Scrotal
+7	+1.3	+34	+81	+1	+31	+24	+9	-.55

Carcass Merit - EPDs

Marb	RE	Fat	\$Wean	\$Feedlot	\$Beef
.83	.07	.050	\$36	\$21	\$98

Top 15% Doc, CEM, Milk, Marb, \$QG.....\$4,000

Angus \$ Value EPDs

\$Values EPDs are reported in \$ per head—
i.e. (\$W) +19 (\$F) +22 (\$G) +19 (\$B) +37

- ◆ **\$Values EPDs**, are computed for \$Weaning, (weaning wt.), \$Feedlot (days on feed, daily rate of gain, ration cost) and \$Grid (Choice-Select spread and Yield Grade 4 & 5s) and \$Beef (heavy wt. carcass discounts).
- ◆ **Weaning Value (\$W)** calculates a \$ per head difference in expected progeny differences for weaning weight compared to progeny of other Angus sires.
- ◆ **Feedlot Value (\$F)** calculates a \$ per head difference in expected progeny differences for feedlot performance compared to progeny of other Angus sires.
- ◆ **Grid Value (\$G)** combines quality grade and yield grade and is calculated for animals with carcass EPDs, ultrasound EPDs, or both types of EPDs.
- ◆ **Beef Value (\$B)** represents the expected average dollar per head difference in the progeny feedlot performance and carcass value compared to progeny of other Angus sires. Beef Value (\$B) is comprised of: Feedlot Value (\$F), Grid Value (\$G) and wt. discounts.

LCC New Standard is a sound moving bull with plenty of thickness and rib. His +10 calving ease, and balanced Epds rank in the top 3% for Milk and \$Wean



production

carcass

BW	WW	MM	YRL	RADG	MARB	REA	FAT	\$F	\$QG	\$B
-.5	+51	+36	+99	+25	+.75	+.53	+.04	+\$65	+\$38	+\$123

NICHOLS BULL EXTRA - Coming Two Year Olds



Nichols Farms
Superior Beef Genetics



A A R Ten X 7008 ranks in the top 10% for, Year wt, RADG, Carcass wt, Marbling, \$Weaning, \$Feedlot, \$Grid, \$Quality Grade, and \$Beef Epd.

production					carcass					
BW	WW	MM	YRL	RADG	MARB	REA	FAT	\$W	\$F	\$B
+6	+64	+23	+124	+28	+97	+67	-.01	+\$70	\$92	+\$165

Angus NICHOLS KING D393 18638423

ID D393 birth date 4/26/16

Individual Performance:

BW	205	ADG	Yrl
76	626	3.48	1180

A A R TEN X 7008 S A
NICHOLS KING A263
NICHOLS RITA U335
NICHOLS EXTRA K205
NICHOLS RITA R30
NICHOLS RITA M264

Expected Progeny Differences: EPDs

CED	BW	WW	YW	RADG	MM	Doc	HP	Scrotal
+8	+3	+44	+88	+22	+27	+18	+9	+41

Carcass Merit - EPDs

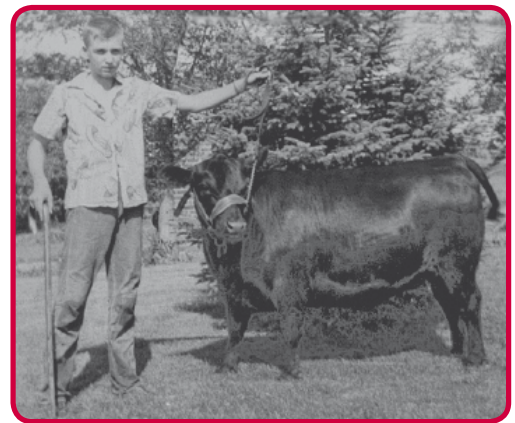
Marb	RE	Fat	\$Wean	\$Feedlot	\$Beef
.23	.83	-.048	\$41	\$35	\$129

Top 25% BW, CEM, Milk, CW, RE, Fat, YG,\$4,000

Beef Value (\$B)

Beef Value EPD (\$B) represents the expected average dollar per head difference in the progeny feedlot performance and carcass value compared to progeny of other Angus sires. Beef Value (\$B) is comprised of: Feedlot Value (\$F), Grid Value (\$G,) and carcass weight discounts.

13 year old Dave Nichols with his Champion 4-H heifer. She proved to be a carrier of the "Snorter Dwarf" recessive gene. This led Dave to seek the council of Dr. Jay Lush at Iowa State, who ignited Dave's passion for genetics and science.



NICHOLS BULL EXTRA - PROVEN PERFORMERS



A young daughter of Nichols Real Quiet W195 pictured with her mid-March calf on July 4th. The calf is sired by Nichols Overload Z66 and traces to Nichols Kelly U75 five times.



Nichols Upgrade B31 is a PB Simmental POWER BULL that thrives on Fescue. He ranks in the top 1% for Wean wt, Year wt, MWW, CW and \$TI. He's sound, has good feet, and a near perfect phenotype.

production

carcass

CE	BW	WW	YRL	MCE	MM	MWW	MARB	REA	\$API	\$TI
+7.9	+2.4	+96	+138	+10	+18	+66	+0.8	+0.98	129	85

Sim NICHOLS OVERLOAD D183 3174418

ID D183 birth date 4/3/16

WLE OVERLOAD
NICHOLS OVERLOAD Z17
NICHOLS MCM N13
NICHOLS MANIFEST Y60
NICHOLS FRECKLES A177
NICHOLS FRECKLES X115

Individual Performance:

BW	205	ADG	Yrl	Frame
81	827	3.57	1382	6.5

Expected Progeny Differences: EPDs

CE	BW	WW	YW	CEM	MM	MWW
+9.8	+1.8	+74	+112	+13	+17	+55

Carcass Merit - EPDs

Marb	RE	Fat	Color	EPD INDEX	API	TI
.13	.65	-.025	hom	139	75	

Top 10% Wean, Year, ADG, Stay - Top 15% CW, TI\$7,000

Sim NICHOLS UPGRADE D90 3174326

ID D90 birth date 3/25/16

MR NLC UPGRADE U8676
NICHOLS UPGRADE B31
NICHOLS BEAUTY W40
NICHOLS LEGACY W18
NICHOLS RUBY Z78
NICHOLS RUBY W24

Individual Performance:

BW	205	ADG	Yrl	Frame
92	834	3.39	1364	6.5

Expected Progeny Differences: EPDs

CE	BW	WW	YW	CEM	MM	MWW
+7.1	+3.0	+83	+119	+12	+17	+58

Carcass Merit - EPDs

Marb	RE	Fat	Color	EPD INDEX	API	TI
.02	.82	-.043	hom	119	75	

Top 5% WW, Mat Milk - Top 10% ADG - Top 20% CEM, TI...\$6,000

Sim NICHOLS BOND D194 3174429

ID D194 birth date 4/4/16

K-LER MAKE IT RAIN
K-LER JAMES BOND 007
KLER HALLEY
NICHOLS EXTRA P78
NICHOLS MANA W33
NICHOLS MANA M47

Individual Performance:

BW	205	ADG	Yrl
86	746	3.41	1270

Expected Progeny Differences: EPDs

CE	BW	WW	YW	CEM	MM	MWW
+4.9	+2.2	+71	+109	+11	+13	+48

Carcass Merit - EPDs

Marb	RE	Fat	Color	EPD INDEX	API	TI
.27	.57	.006	hom	96	69	

Top 30% WEAN, YRL, ADG, MCE, DOC, CW\$4,000

NICHOLS BULL EXTRA - Coming Two Year Olds



Nichols Manifest T79 may be the greatest PB Simmental sire ever bred by Nichols Farms. His EPDs rank him in the top 10% of the breed for Wean wt, ADG, Year wt, MCE, MWW, CW, Marb, Shr, \$API and \$TI.

production

carcass

CE	BW	WW	YRL	MCE	MM	MWW	MARB	REA	SAPI	STI
+9	+1.9	+75	+124	+12	+20	+58	+2.8	+8	140	78

Sim NICHOLS OVERLOAD D43 3174279

ID D43 birth date **3/21/16**

WLE OVERLOAD
NICHOLS OVERLOAD Z66
NICHOLS CEZ R6
K-LER JAMES BOND 007
NICHOLS BLACKCAP Z167
NICHOLS BLACKCAP SXX076

Individual Performance:

BW	205	ADG	Yrl
87	708	3.01	1181

Expected Progeny Differences: EPDs

CED	BW	WW	YW	CEM	MM	MWW
+8.3	+3.0	+64	+88	+11	+16	+48

Carcass Merit - EPDs

Marb	RE	Fat	Color	EPD INDEX
			Black	API TI
.21	.43	-.087	hom	117 69

Top 50% WEAN, MCE, DOC, MARB, BF, TI\$4,000

Sim NICHOLS BOND D160 3174395

ID D160 birth date **3/31/16**

K-LER JAMES BOND 007
NICHOLS BOND Z131
NICHOLS BLK DIAMOND SXX110
NICHOLS LEGEND P150
NICHOLS JULIA Z64
NICHOLS JULIA T231

Individual Performance:

BW	205	ADG	Yrl
95	692	3.94	1310

Expected Progeny Differences: EPDs

CED	BW	WW	YW	CEM	MM	MWW
+4.7	+3.7	+68	+104	+9	+19	+53

Carcass Merit - EPDs

Marb	RE	Fat	Color	EPD INDEX
			Black	API TI
.23	.59	.037	hom	99 64

Top 35% WEAN, YRL, ADG, MCE, CW\$4,000

Sim NICHOLS KING D291 3141684

ID D291 birth date **4/6/16**

RC CLUB KING 040R
NICHOLS KING Y22
NICHOLS MCM N156
SAFN MAN O WAR L10
NICHOLS LINDEN R35
NICHOLS LINDEN M150

Individual Performance:

BW	205	ADG	Yrl
86	710	4.34	1244

Expected Progeny Differences: EPDs

CED	BW	WW	YW	CEM	MM	MWW
+9.8	+2.8	+61	+96	+10	+20	+51

Carcass Merit - EPDs

Marb	RE	Fat	Color	EPD INDEX
			Black	API TI
-.16	.61	-.072	hom	105 60

Top 45% CED, YRL, ADG, MCE, DOC, BF.....\$4,000

Simmental \$\$ Value EPDs

All-Purpose Index (API\$) calculates a \$ per head difference in the progeny of sires that are used on an entire cow herd with their daughters retained to maintain herd size and the remaining heifers and steers put on feed and sold grade and yield.

Terminal Index (TI\$) calculates a \$ per head difference in the progeny of sires for use on mature cows with all offspring put on feed and sold grade and yield. Maternal traits such as milk, stayability, and maternal calving ease are not in the index. Similar to Angus (\$B)

Sim NICHOLS OVERLOAD D146 3174381

ID D146 birth date **3/30/16**

WLE OVERLOAD
NICHOLS OVERLOAD Z17
NICHOLS MCM N13
NICHOLS MANIFEST T79
NICHOLS BEAT A106
NICHOLS BEAT W11

Individual Performance:

BW	205	ADG	Yrl
90	729	4.01	1360

Expected Progeny Differences: EPDs

CED	BW	WW	YW	CEM	MM	MWW
+9.7	+1.8	+70	+110	+13	+17	+52

Carcass Merit - EPDs

Marb	RE	Fat	Color	EPD INDEX
			Black	API TI
.01	.92	-.074	hom	129 70

Top 35% WEAN, YRL, ADG, STAY, CW, YG, BF, TI \$4,000

Sim NICHOLS MANIFEST D223 3174458

ID D223 birth date **4/6/16**

NICHOLS MANIFEST T79
NICHOLS MANIFEST Z86
NICHOLS ANN P144
KLER COHIBA
NICHOLS CARLENE X43
NICHOLS CARLENE T60

Individual Performance:

BW	205	ADG	Yrl
92	707	3.68	1284

Expected Progeny Differences: EPDs

CED	BW	WW	YW	CEM	MM	MWW
+7.2	+2.4	+56	+92	+14	+29	+57

Carcass Merit - EPDs

Marb	RE	Fat	Color	EPD INDEX
			Black	API TI
-.19	.69	-.03	het	102 56

Top 30% ADG, MCE, MILK, MWW, DOC, CW.....\$4,000

SX1 NICHOLS BEEFMAKER SXD216 3176655

ID D216 birth date **4/14/16**

NICHOLS IDEAL Z286
NICHOLS IDEAL B77
NICHOLS QUEEN R327
NICHOLS SENSATION K45
NICHOLS CEZ M214
NICHOLS CEZ F131

Individual Performance:

BW	205	ADG	Yrl
83	650	3.30	1156

Expected Progeny Differences: EPDs

CED	BW	WW	YW	CEM	MM	MWW
+3.1	+1.2	+53	+81	+4	+14	+41

Carcass Merit - EPDs

Marb	RE	Fat	Color	EPD INDEX
			Black	API TI
.13	.28	-.067	hom	104 56

Top 30% STAY, CW..... \$3,500

NICHOLS BULL EXTRA - Coming Two Year Olds



South Devon Crossbred Steers

Devon NFL DURANGO DSD045

Reg # 210777

ID D45 birth date **3/30/16**

Individual Performance:

BW	205	ADG	Yrl
81	683	3.90	1309

Expected Progeny Differences: EPDs

BW	WW	YW	MM	MWW
+2.	+50	+89	+21	+45

Carcass Merit - EPDs

Marb	RE	Fat	%	Color
.3	.26	.010	75	het

Top 50% WEAN, YRL, ADG, RE.....\$4,500

DLCC SHUR LOC 99W
DLCC DURANGO 26Z
DLCC MANDI 55U
DOUBLE DOOZIE
NFL NICHOLS MISS DXY029
NICHOLS MISS ELDINA S329

DX1 NICHOLS MONEYMAKER DXD21

Reg # 211321

ID D21 birth date **3/23/16**

Individual Performance:

BW	205	ADG	Yrl
85	757	4.19	1435

Expected Progeny Differences: EPDs

BW	WW	YW	MM	MWW
+1.5	+37	+72	+24	+43

Carcass Merit - EPDs

Marb	RE	Fat	%	Color
.17	.33	.022	DX1	het

Top 25% BW....\$4,500

NICHOLS T807
MMM MAJESTIC Y801
MMM GOLDEN STAR W949
NICHOLS COMMITMENT R438
NICHOLS RITA T122
NICHOLS RITA P1

Devon NFL CARUSO DSD077

Reg # 210791

ID D77 birth date **4/9/16**

Individual Performance:

BW	205	ADG	Yrl
80	680	4.28	1366

Expected Progeny Differences: EPDs

BW	WW	YW	MM	MWW
+2.8	+48	+98	+23	+47

Carcass Merit - EPDs

Marb	RE	Fat	%	Color
.6	.27	.010	75	het

Top 25% YRL, SCR, RE, MARB, CW.....\$4,000

CIMARRON REBEL 707T
CIMARRON CARUSO 923W
CIMARRON CUPCAKE 444P
NICHOLS BLACK PERFECTION
NFL NICHOLS LULA DXA040
NICHOLS LULA Y204

Nichols Black Perfection is a "Tank". His exceptional muscle coupled with his tremendous depth of body comes at time when cattlemen need genetics that will add fleshing and muscle mass to their cattle



production

carcass

BW	WW	MM	YRL	MARB	REA	FAT	CAR WT.	YIELD %
+6.2	+59	+17	+97	-.2	+1.2	+0.0	+28	+8



Headquarters for Heterosis

Crossbred cows producing Composite sired calves provide a 23.3% Improvement in Pounds of Weaned Calf per cow exposed over straight bred cows and calves!

—USDA Meat Animal Research Center

Welcome to Nichols Farms

Sale Terms and Conditions - 2017

Bulls will be semen checked prior to pick up or delivery.

Nichols Farms offers death and loss of use warranty on their sale bulls. This warranty must be purchased at time of sale.

Bulls are guaranteed to service cows. Any bull that settles healthy cows by natural service or passes a fertility test made by a certified veterinarian mutually agreed upon by Nichols Farms and buyer shall be considered a breeder.

The following exceptions apply to all breeding animals sold by Nichols Farms.

- Animals put in service or bred at less than 12 months of age.
- Injury or disease to the animal occurring after the sale.
- Gross negligence or misconduct on the part of the buyer.

- ✓ *Volume discounts*
- ✓ *Health & Death Warranty (limited)*
- ✓ *\$100 off if you pick up your Bull(s)*
- ✓ *Free of Genetic Abnormalities— AM, NH, MI, CA, DD, MI, TH, and PH by pedigree or DNA test*

2188 Clay Avenue ♦ Bridgewater, Iowa 50837

office 641-369-2829 *Dave's home* 712-762-3810

fax 641-369-2932 *Ross Havens cell* 641-745-5241

www.nicholsfarms.biz



Justin Dammann visits with Ross Havens about cross-breeding plans that will maximize heterosis and increase profit in his herd, which is located near Essex, Iowa. He has purchased 56 herd bulls from Nichols Farms the past six years.

Regardless of herd size, “Team Nichols” always stands ready to help their customers adopt a simple breeding plan, and will suggest bulls that will get the job done. Plus Ross will notify selected feedlots when their calves sell.