

# Nichols Farms

## *Private Treaty Herd Bull Sale*

These bulls were used in a major research project. Their sons and daughters will be providing specific phenotypes that may be major for the beef industry. This is not "New News" for Nichols Farms. We were the very first herd (1987) to utilize ultra-sound to measure IMF% (marbling) and lean yield grade. We also continue to be the leader in utilizing DNA technology. The past thirteen years Nichols herd sires have been DNA profiled for several product and performance traits. About 40 Nichols Bulls have stood in major A.I. Studs the past 50 years. Many of them were offered in the Bull Extra sales.



*dave nichols*



**- Nichols Blackbird W186 with her SX calf -**

**2188 Clay Avenue  
Bridgewater, Iowa 50837-8047  
Nichols Bull Barn: 641-369-2829**

Give us call or visit  
These bulls are being offered for sale "first come first served". Select one or more of these bulls. They are semen checked and ready to go to work in your herd - \$100 off the price, if you pick them up.

**Nichols Farms**  
*Superior Beef Genetics*

# NICHOLS BULL EXTRA - Coming Two Year Old ANGUS Bulls



A pure bred Angus heifer with her day old calf. Nichols' attention to Calving Ease Maternal is critical for Alex Antidel who calves and cares for 250 Nichols Farms' first calf heifers.

**Angus**    **NICHOLS EXTRA H228**    #19879932

**ID H228**    birth date **3/30/20**

NICHOLS EXTRA D182  
NICHOLS EXTRA F168  
NICHOLS BLACKCAP Y137  
NICHOLS QUIET LAD Z27  
NICHOLS LULA F313  
NICHOLS LULA B154

**Individual Performance:**

BW	205	ADG	YrL
85	659	3.40	1214

**Expected Progeny Differences: EPDs**

CED	BW	WW	MM	YW	RADG	CEM	DOC	SCR
-6	+3.7	+63	+26	+114	+2.5	+4	+25	+8

**Economic Relative \$ Values: EPDs**

\$ Maternal	\$ Wean	\$ Feedlot	\$ Beef	\$ Combined	Price
\$59	\$58	\$77	\$106	\$196	\$4,500

**Angus**    **NICHOLS STALWART H8**    #19879876

**ID H8**    birth date **3/5/20**

BUBS Southern Charm AA31  
BUBS Deep South 671D  
BUBS Flora X38  
THOMAS TOP HAND 0536  
NICHOLS BLACKBIRD F63  
NICHOLS BLACKBIRD X155

**Individual Performance:**

BW	205	ADG	YrL
74	619	2.84	1083

**Expected Progeny Differences: EPDs**

CED	BW	WW	MM	YW	RADG	CEM	DOC	SCR
+2	+3	+52	+29	+94	+2.5	+8	+19	+1.8

**Economic Relative \$ Values: EPDs**

\$ Maternal	\$ Wean	\$ Feedlot	\$ Beef	\$ Combined	Price
\$70	\$62	\$87	\$139	\$250	\$4,000

**Angus**    **NICHOLS EXTRA H353**    #19879978

**ID H353**    birth date **4/24/20**

K C F BENNETT SOUTHSIDE  
NICHOLS EXTRA E144  
NICHOLS MISS BARBARA C13  
NICHOLS QUIET LAD X366  
NICHOLS BLACKCAP A70  
NICHOLS BLACKCAP X1

**Individual Performance:**

BW	205	ADG	YrL
91	705	3.63	1297

**Expected Progeny Differences: EPDs**

CED	BW	WW	MM	YW	RADG	CEM	DOC	SCR
-9	+5.8	+75	+26	+120	+2.2	+1	+34	+2

**Economic Relative \$ Values: EPDs**

\$ Maternal	\$ Wean	\$ Feedlot	\$ Beef	\$ Combined	Price
\$71	\$68	\$91	\$134	\$245	\$5,000

**Angus**    **N GOOD AS GOLD H413**    #19932396

**ID H413**    birth date **4/18/20**

NICHOLS GOOD AS GOLD W121  
NICHOLS GOOD AS GOLD C135  
NICHOLS BLACKCAP Z148  
NICHOLS QUIET LAD X42  
ASF BLACKCAP 412  
ASF BLACKCAP 209

**Individual Performance:**

BW	205	ADG	YrL
85	657	4.14	1193

**Expected Progeny Differences: EPDs**

CED	BW	WW	MM	YW	RADG	CEM	DOC	SCR
+6	+2	+61	+30	+114	+2.4	+7	+28	+6

**Economic Relative \$ Values: EPDs**

\$ Maternal	\$ Wean	\$ Feedlot	\$ Beef	\$ Combined	Price
\$71	\$70	\$80	\$104	\$206	\$4,500

**Angus**    **N GOOD AS GOLD H418**    #19932391

**ID H418**    birth date **4/12/20**

NICHOLS GOOD AS GOLD W121  
NICHOLS GOOD AS GOLD C135  
NICHOLS BLACKCAP Z148  
ASF EXTRA 836  
ASF BLACK HEIRESS 140  
ASF BLACK HEIRESS 915

**Individual Performance:**

BW	205	ADG	YrL
80	685	3.81	1231

**Expected Progeny Differences: EPDs**

CED	BW	WW	MM	YW	RADG	CEM	DOC	SCR
-3	+2.9	+51	+19	+100	+2.4	+5	+16	+5

**Economic Relative \$ Values: EPDs**

\$ Maternal	\$ Wean	\$ Feedlot	\$ Beef	\$ Combined	Price
\$52	\$36	\$86	\$109	\$193	\$4,500

Nichols Good As Gold C83 is a slick haired AN-GUS POWER BULL that is pictured breeding cows on fescue pasture. He's in the top 20% for Wean weight, Scrotal, RADG, Docility, Heifer pregnancy, and Mat Calving Ease



production

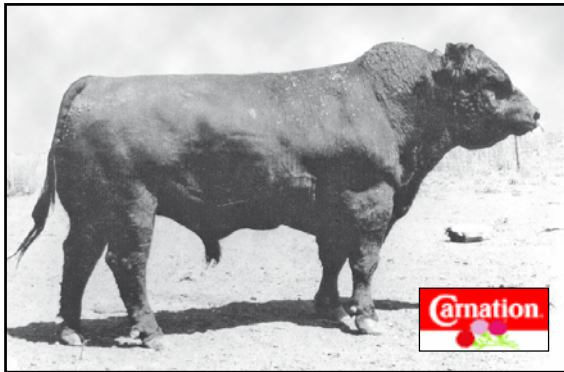
carcass

BW	WW	MM	YRL	RADG	MARB	\$W	\$F	\$B	SC
+2	+59	+27	+116	+2.7	+25	+56	+\$91	+\$123	+\$211

# NICHOLS BULL EXTRA - Coming Two Year Old ANGUS Bulls



**Nichols Performa D162 sired both Grand Champion Angus Bull and Grand Champion Angus Heifer at Palermo Livestock Show (Argentina)**



**Bell Boys Heir - Certified Meat Sire - 1961 - Bred and owned by Merrill Nichols and Sons. Leased to Carnation Breeding Service**

**Angus NICHOLS PERFORMA H124 #19884737**

**ID H124 birth date 3/21/20**

Nichols Formula U193  
NICHOLS PERFORMA D162  
NICHOLS LULA B87  
NICHOLS DESIGN N227  
NICHOLS BLACKCAP U294  
NICHOLS BLACKCAP R238

**Individual Performance:**

BW	205	ADG	Yrl
80	639	3.27	1172

**Expected Progeny Differences: EPDs**

CED	BW	WW	MM	YW	RADG	CEM	DOC	SCR
+4	+2.8	+37	+33	+84	+24	+6	+27	+4

**Economic Relative \$ Values: EPDs**

\$ Maternal	\$ Wean	\$ Feedlot	\$ Beef	\$ Combined	Price
\$25	\$34	\$81	\$119	\$179	\$4,000

**Angus NICHOLS EXTRA H397 #19879994**

**ID H397 birth date 5/13/20**

K C F BENNETT SOUTHSIDE  
NICHOLS EXTRA E97  
NICHOLS BLACKCAP T397  
NICHOLS QUIET LAD T9  
NICHOLS STACY Z68  
NICHOLS STACY X185

**Individual Performance:**

BW	205	ADG	Yrl
83	676	3.24	1100

**Expected Progeny Differences: EPDs**

CED	BW	WW	MM	YW	RADG	CEM	DOC	SCR
+7	+1.	+45	+16	+88	+23	+7	+27	+1

**Economic Relative \$ Values: EPDs**

\$ Maternal	\$ Wean	\$ Feedlot	\$ Beef	\$ Combined	Price
\$55	\$36	\$75	\$106	\$192	\$4,000

**Angus NICH CHANCELLOR H345 #19879975**

**ID H345 birth date 4/22/20**

THOMAS TOP HAND 0536  
NICHOLS CHANCELLOR D236  
NICHOLS BLACKCAP X162  
NICHOLS KING A175  
NICHOLS BLK HEIRESS E443  
NICHOLS BLK HEIRESS Y331

**Individual Performance:**

BW	205	ADG	Yrl
88	716	3.56	1200

**Expected Progeny Differences: EPDs**

CED	BW	WW	MM	YW	RADG	CEM	DOC	SCR
-1	+4.3	+70	+26	+124	+3	+9	+18	+2

**Economic Relative \$ Values: EPDs**

\$ Maternal	\$ Wean	\$ Feedlot	\$ Beef	\$ Combined	Price
\$44	\$61	\$105	\$151	\$240	\$4,000

**Thomas Top Hand has low birth weight "heifer bull" and high quality carcass Epds. He also ranks in the top 25% for RADG, SC, HP, Marb and CW. He's in the top 4% for \$F, \$B and \$C.**



**production carcass**

CE	BW	WW	MM	YRL	RADG	DOC	\$M	\$W	\$F	\$B	\$C
+10	-.5	+68	+24	+121	+31	+16	+51	+\$71	+\$122	+\$176	+\$269

**Genetic Abnormalities**

All Nichols Bulls selling are free by pedigree or DNA Test of the following Genetic Abnormalities— AM-NH-CA-DD-M1-TH-PH



# NICHOLS BULL EXTRA - Fall Yearling Angus & SX

**Angus** NICHOLS CRUSADER H474 #20087866

ID **H474** birth date **10/6/20**

**Individual Performance:**

BW 205 ADG YrI CE  
83 643 3.24 1085 cows

NICHOLS FINAL ANSWER Y34  
NICHOLS CRUSADER E103  
NICHOLS BLACKBIRD Y8  
NICHOLS CRUSADER A311  
ASF BLACK HEIRESS 723  
ASF BLACK HEIRESS 570

**Expected Progeny Differences: EPDs**

CED BW WW MM YW RADG CEM DOC SCR  
+5 +2.2 +66 +23 +113 +.24 +6 +26 +1

**Rank of H474 Economic Relative Traits (ERTs) annual \$ per head**

\$Maternal	\$Wean	\$Feedlot	\$Beef	\$Combined
\$74	\$67	\$76	\$114	\$222
20%	35%	70%	80%	70%

.....\$4,250

## What is a Nichols Hybrid Bull?

Nichols' Hybrids are the result of crossing two Registered Purebred parents to combine the best traits of two breeds. Their predicted EPDs are as accurate as purebreds.

A Nichols Hybrid bull's heterosis (cross bred vigor) is transmitted to his offspring. Plus, his calves are more uniform than back crossing purebreds. Virtually all poultry, swine, and grain genetics are the result of systematic composite breeding.

**SX** NICHOLS VARSITY H268 #3913983

ID **H268** birth date **10/15/20**

**Individual Performance:**

BW 205 ADG YrI  
84 651 3.29 1062

GIBBS 0689X CRIMSON TIDE  
NICHOLS VARSITY C4  
NICHOLS GALANT U74  
NICHOLS QUIET LAD W47  
ASF KINDEW 267  
ASF KINDEW 714

**Expected Progeny Differences: EPDs**

CED BW WW YW CEM MM MWW  
+8.3 +3 +94 +151 +3.7 +21 +68

**Economic Relative \$ Indexes Convenience Traits**

\$All Purpose (API)	\$ Terminal (TT)	Black Color	Docility	Price
\$116	\$86	hom	+13	\$4,250

## Sale Terms and Conditions - 2021

Bulls will be semen checked prior to pick up or delivery. Nichols Farms offers death and loss of use warranty on their sale bulls. This warranty must be purchased at time of sale.

Bulls are guaranteed to service cows. Any bull that settles healthy cows by natural service or passes a fertility test made by a certified veterinarian. These exceptions apply to all breeding animals sold by Nichols Farms.

- Animals put in service or bred at less than 12 months of age.
- Injury or disease to the animal occurring after the sale.
- Gross negligence or misconduct on the part of the buyer.

office 641-369-2829 Dave's home 712-762-3810  
fax 641-369-2932 Ross Havens cell 641-745-5241  
2188 Clay Avenue, Bridgewater, Iowa 50837

**Nichols Final Answer Y34 is a MEAT WAGON who is tolerant to Fescue. His Epds are in the top 12% for CED, WW, Doc, \$W, and \$M. He is a rare combination of calving ease, \$W and \$M.**



**Expected Progeny Differences & ERT \$EPDs**

CE	BW	WW	MM	YRL	RADG	\$M	\$W	\$F	\$B	\$C
+12	-.1	+67	+20	+109	+.21	+71	+70	+74	+112	+216

**Angus** NICHOLS CRUSADER H468 #20087859

ID **H468** birth date **10/15/20**

**Individual Performance:**

BW 205 ADG YrI CE  
82 683 3.36 1065 cows

NICHOLS FINAL ANSWER Y34  
NICHOLS CRUSADER E103  
NICHOLS BLACKBIRD Y8  
NICHOLS QUIET LAD Y194  
ASF BLACKBIRD 626  
NICHOLS BLACKBIRD Z357

**Expected Progeny Differences: EPDs**

CED BW WW MM YW RADG CEM DOC SCR  
+2 +2.8 +67 +33 +113 +.29 +6 +28 +.6

**Rank of H468 Economic Relative Traits (ERTs) annual \$ per head**

\$Maternal	\$Wean	\$Feedlot	\$Beef	\$Combined
\$72	\$80	\$91	\$124	\$233
25%	10%	35%	65%	55%

.....\$3,750

**Gibbs 0689X Crimson Tide's heavy muscle, plus his Epds rank him in the top 10% for Wean wt, ADG, Year wt, \$CW., Shear lorce and top 5% \$TI makes him a "keeper"**



**production**

**carcass**

CE	BW	WW	YRL	MCE	MM	MWW	MARB	REA	\$API	\$TI
+5	+2.4	+80	+131	+5	+19	+60	+44	+1.0	136	85

Thanks For Coming!

**Nichols Farms**  
Superior Beef Genetics

2188 Clay Avenue ♦ Bridgewater, IA 50837

office 641-369-2829

Dave's home 712-762-3810

fax 641-369-2932

Ross's cell 641-745-5241

[www.nicholsfarms.biz](http://www.nicholsfarms.biz)

# Produce Sale Topping Feeder Cattle with Nichols Bulls



**This past December at the Creston Livestock Feeder Calf Sale our customers' cattle sold for **\$61.47 more per head** than the sale average.**

Our goal at Nichols Farms the past 69 years has been to create success for our customers. At the December 2nd sale at the Creston, Iowa Livestock Feeder Sale; our customers calves brought an average of \$61.47 more per head than the sale average. Nichols Bulls will sire about 100 calves.... 100 calves sired with the \$61.47 per

head Nichols Advantage creates \$6,147 profit! Add the \$1,500 salvage value and he generates \$7,647 lifetime revenue. That makes a \$4,000 to \$7,500 Nichols Bull investment a great purchase. Plus you get impressive Nichols sired heifers for replacements with bred-in fertility, sound feet & udders, longevity, docility and tolerance to fescue.