

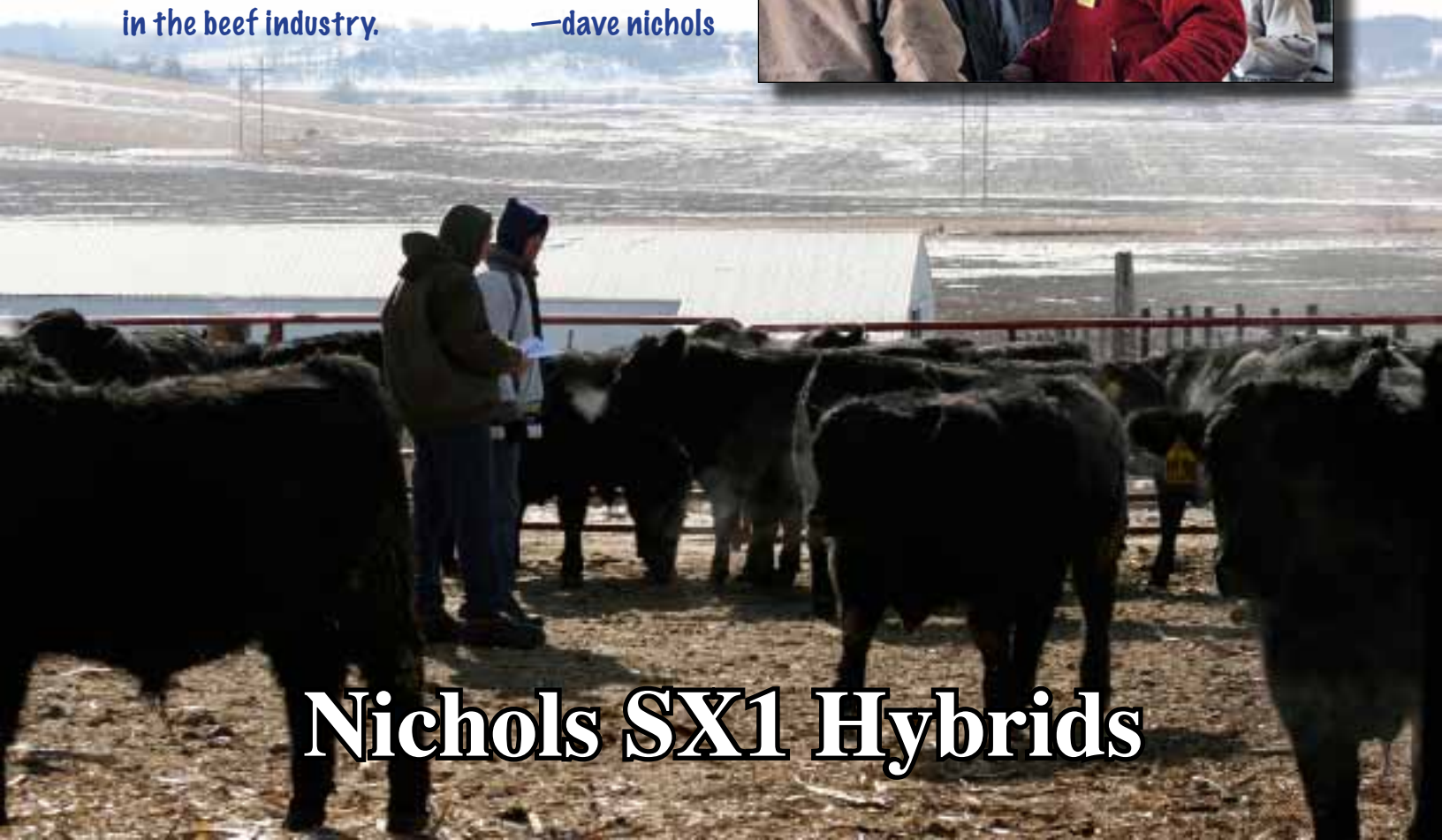
Nichols Farms

Private Treaty Bull Sale

65 Years of 6/5/18
Superior Beef Genetics

"Large or small, old or new - Nichols customers are our friends, and can expect the same level of performance and service from our stock and our team. And you will have the benefit of being a part of the Nichols family."

Come and take a look at some of the best bulls in the beef industry. —dave nichols



Nichols SX1 Hybrids

Welcome to Nichols Farms

Glossary of Items on Nichols Bulls...

Breed : Angus, Simmental, SX and DX Composites.

Brand/Tag: Ear Tag , Brand, Tattoo & Name are the same.

Color: B—Black, BWF— Black-baldy, (may have other white)

Horn/Poll: P — Smooth Polled S is Polled with scurs

Birth Date: Birthday of animal.

Birth Wt.: Actual birth weight.

205 Adj: Weaning weight adjusted to 205 days of age

205 Ratio: An within-herd index of a calf's weaning weight

Cum ADG: Average Daily Gain for the entire feedlot test period computed from actual weaning weight to yearling weight

EPDs: Expected Progeny Differences are estimates based on the data of the individual animal and his relatives in all the different herds across the breed's population. EPD's figures are in actual pounds, plus (+) or minus (-) for each trait. Those below would be minus (-) and those above average would be plus (+). You can expect these differences in the actual weight of your bull's calves. EPDs predict the transmitting ability of each bull when compared with the many thousands of bulls in each breed.

EPD Note: You can compare the purebred Nichols Angus, purebred South Devons and South Devon Hybrids because their base point has been adjusted to the Angus base. You can not compare EPD's between Nichols pure-bred Simmentals, pure bred Angus and Nichols Composites. Nichols pure-bred Simmentals and Simmental Hybrids are on the Simmental base.

Color: **hom** is homozygous black, **het** is heterozygous red carrier

Carcass EPDs: Marbling: Intramuscular fat in the rib eye determines USDA quality grade. Prime, CAB, Choice, or Select

BF: Back fat thickness in inches measured on the rib eye.

REA: Rib eye area in square inches measured at the 13th rib.

Calving Ease: Suitable to breed "heifers" or "cows"

Genomic Tested Trait = Progeny Equivalents	
Calving Ease Direct	28
Birth Weight	21
Weaning Weight	26
Yearling Weight	11
Docility	10
Heifer Pregnancy	14
Calving Ease Maternal	18
Carcass Marbling	9
Carcass Ribeye area	12

- Angus \$\$ Value EPDs -

Weaning Value (\$W) calculates a \$ per head difference in expected progeny differences for weaning weight compared to progeny of other Angus sires.

Feedlot Value (\$F) calculates a \$ per head difference in expected progeny differences for feedlot performance.

Grid Value (\$G) combines quality grade and yield grade and is calculated for animals with carcass EPDs.

Beef Value (\$B) is comprised of: Feedlot Value (\$F), Grid Value (\$G,) and carcass wt. discounts.

Total Value (\$TV) combines \$Weaning (\$W) and \$Beef (\$B) values compared to progeny of other Angus Sires. **Similar to Simmental \$API**

- Simmental \$\$ Value EPDs -

All-Purpose Index (API\$) calculates a \$ per head difference in the progeny of sires that are used on an entire cow herd with their daughters required to maintain herd size retained and the remaining heifers and steers put on feed and sold grade and yield.

Terminal Index (TI\$) calculates a \$ per head difference in the progeny of sires for use on mature cows with all offspring put on feed and sold grade and yield. Consequently maternal traits such as milk, stability, and maternal calving ease are not in the index. **Similar to Angus \$B.**

Sale Terms and Conditions - 2018

Bulls will be semen checked prior to pick up or delivery.

Nichols Farms offers death and loss of use warranty on their sale bulls. This warranty must be purchased at time of sale.

Bulls are guaranteed to service cows. Any bull that settles healthy cows by natural service or passes a fertility test made by a certified veterinarian mutually agreed upon by Nichols Farms and buyer shall be considered a breeder.

The following exceptions apply to all breeding animals sold by Nichols Farms.

- Animals put in service or bred at less than 12 months of age.
- Injury or disease to the animal occurring after the sale.
- Gross negligence or misconduct on the part of the buyer.

Nichols Farms
Superior Beef Genetics

2188 Clay Avenue • Bridgewater, Iowa 50837

Bull Barn: 641-369-2829

fax: 641-369-2932

Ross cell: 641-745-5241

www.nicholsfarms.biz

Pen D —Nichols Better SX-1 Bulls —

Pen: C NICHOLS BEEFMAKER SXE118

ID: E118 birth 3/27/17

Individual Performance:
Hold
BW 205 Wt ADG YW
85 618 4.02 1234

NICHOLS BOND Z131
 NICHOLS BOND C233
 NICHOLS GALE T74
 NICHOLS EXTRA N59
 NICHOLS ABBEY R269
 NICHOLS ABBEY M94

Expected Progeny Differences: EPDs

CED	BW	WW	YW	CEM	MM	MW	%	Color	Poll
+8	+1.7	+54	+82	+5	+20	+47	SX1	hom	P

Carcass Merit EPDs:

Marb	REA	Fat	EPD Index	\$API	\$TI	Price
.31	.55	.014	97	60	\$4,000	

Pen: C NICHOLS BEEFMAKER SXE215

ID: E215 birth 4/5/17

Individual Performance:
Hold
BW 205 Wt ADG YW
74 674 3.48 1199

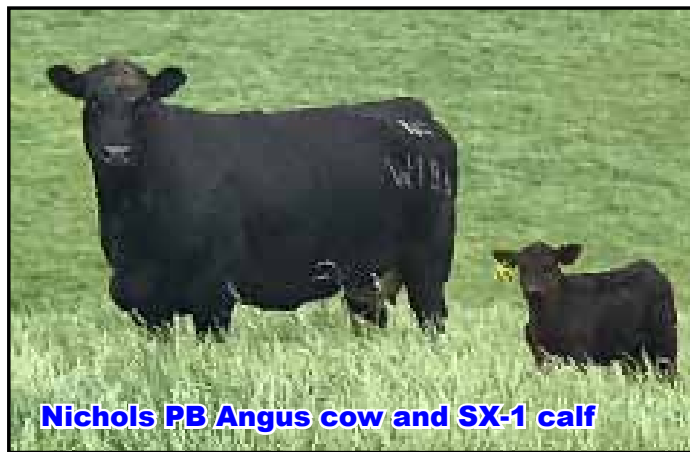
NICHOLS QUIET LAD T9
 NICHOLS QUIET LAD C365
 NICHOLS BLACKCAP Y349
 NICHOLS LUCKY N134
 NICHOLS GALA S63
 NICHOLS GALA G137

Expected Progeny Differences: EPDs

CED	BW	WW	YW	CEM	MM	MW	%	Color	Poll
+10	-.8	+63	+108	+9	+23	+55	SX1	het	P

Carcass Merit EPDs:

Marb	REA	Fat	EPD Index	\$API	\$TI	Price
.40	.57	-.017	136	74	\$4,000	



Nichols PB Angus cow and SX-1 calf

Thanks For Coming!

Nichols Farms
Superior Beef Genetics

2188 Clay Avenue ♦ Bridgewater, IA 50837

office 641-369-2829

Dave's home 712-762-3810

fax 641-369-2932

Ross's cell 641-745-5241

www.nicholsfarms.biz



Gibbs Cattle Co - Harrison, Nebraska

Headquarters for Heterosis

Crossbred cows producing Composite sired calves provide a 23.3% Improvement in Pounds of Weaned Calf per cow exposed over straight bred cows and calves!

— USDA Meat Animal Research Center

Nichols Hybrids and Composites are the result of crossing two or more pure lines in specific crosses to maximize the best traits of the grandparent lines. All Nichols lines are black and polled.

A Composite bull's heterosis (cross bred vigor) is

transmitted to his offspring. Plus, his calves are more uniform in type, performance, and carcass characteristics than back crossing purebreds.

Virtually all poultry, swine, and grain genetics are the result of systematic composite breeding.

PURE LINES

AN = PUREBRED ANGUS

—100% British

SM = PUREBRED SIMMENTALS

—100% Continental

DS = PUREBRED SOUTH DEVON

—100% British

note: *These pedigrees are examples. Nichols Composites' sires and dams may be reciprocal crosses. This does not effect their breed %, performance, phenotype, quality, carcass traits, or transferable heterosis.

F-1 HYBRIDS

SX1 = PB ANGUS by PB SIMMENTAL

Nichols PB Angus

Nichols SX1

Nichols PB Simmental

—*50% British - 50% Continental

DX1 = PB SOUTH DEVON by PB ANGUS

Nichols PB South Devon

Nichols DX1

Nichols PB Angus

—*100% British

F-2 COMPOSITES

DAX2 = DX1 by SX1

Nichols PB South Devon

Nichols DX1

Nichols PB Angus

Nichols DAX2

Nichols PB Angus

Nichols SX1

Nichols PB Simmental

—*75% British - 25%Continental